



**Case Study**

**LED Message Display Board Solution**

**For**

**Real Time Dynamic Production Report**

Coastal Gujarat Power Ltd (CGPL) was incorporated on 10th Feb. 2006, as a special purpose vehicle (SPV) to implement the Mundra Ultra Mega Power Project. The Mundra UMPP was awarded to Tata Power and as per the share purchase agreement Tata Power acquired CGPL on 22 April 2007.

The project will have five units of 800 MW each, generating a total of 4,000 MW using supercritical technology and 40,000 MT /day imported coal.



Power will be evacuated through six 400kV lines, to be installed by Power Grid, to ultimately benefit the States of Gujarat, Maharashtra, Punjab, Haryana and Rajasthan

The 1,200 hectare site is located in coastal area, south of Tunda village in Mundra taluka, Kutch district of Gujarat. The site is well connected by road, rail, air and sea.

Following are the salient features of the project location:

- Nearest Highways: SH-6 (6 Kms) & NH-8A (15 Kms),
- Nearest Seaport: Mundra ~ 25 Kms
- Nearest Rail Head: Adipur ~ 85 Kms,
- Nearest Airports: Bhuj & Kandla ~75 Kms

## Challenges:

**CGPL** wanted to translate the real time production parameters into visual indication. This real time visual indication of production parameters will help enhance the productivity and awareness.

## Solution:

**Compucare** with its expertise was able to rise up to the challenge of **CGPL** by providing one of the largest production LED Message Display Board. The size of the LED Message Display Board is 200cm x 200cm. The size enables **CGPL** to populate as much data as possible on a single screen. The Large LED Message Display Board are single sided with bright RED LED display, the display boards are clearly visible from an optimum distance of 10 meters and is designed to suit their factory condition.

## How LED Message Board Solution for Real Time Dynamic Production is achieved?

- The data is populated in the data server.
- The populated data is exported of .xls format.
- The LED Software Server imports and reads the data from the .xls format.
- The read data is displayed in the Large LED Message Display Board.
- The content in the LED Message Display Board is refreshed automatically in regular intervals.

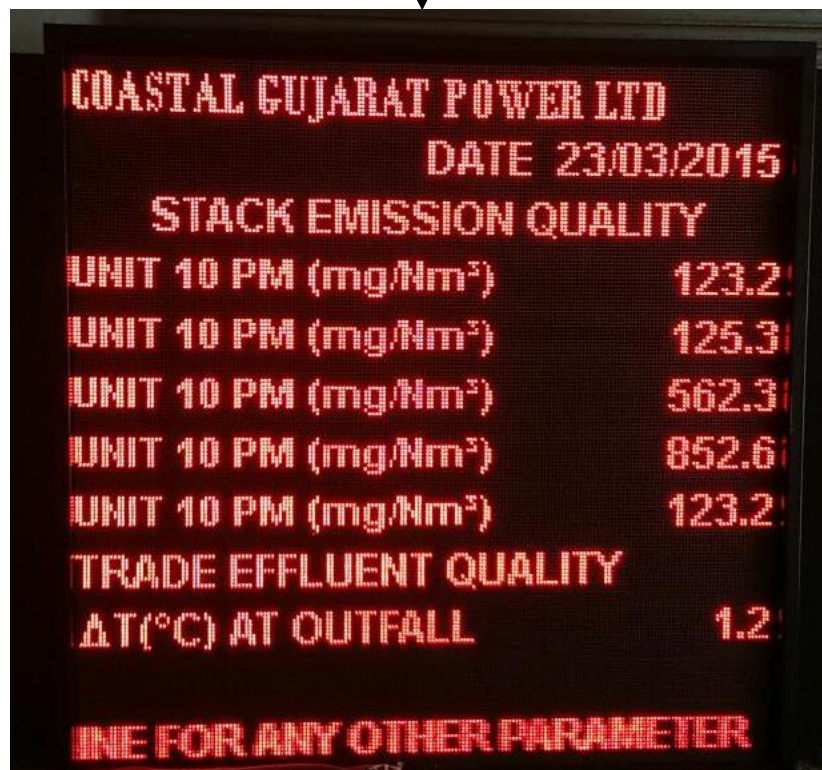
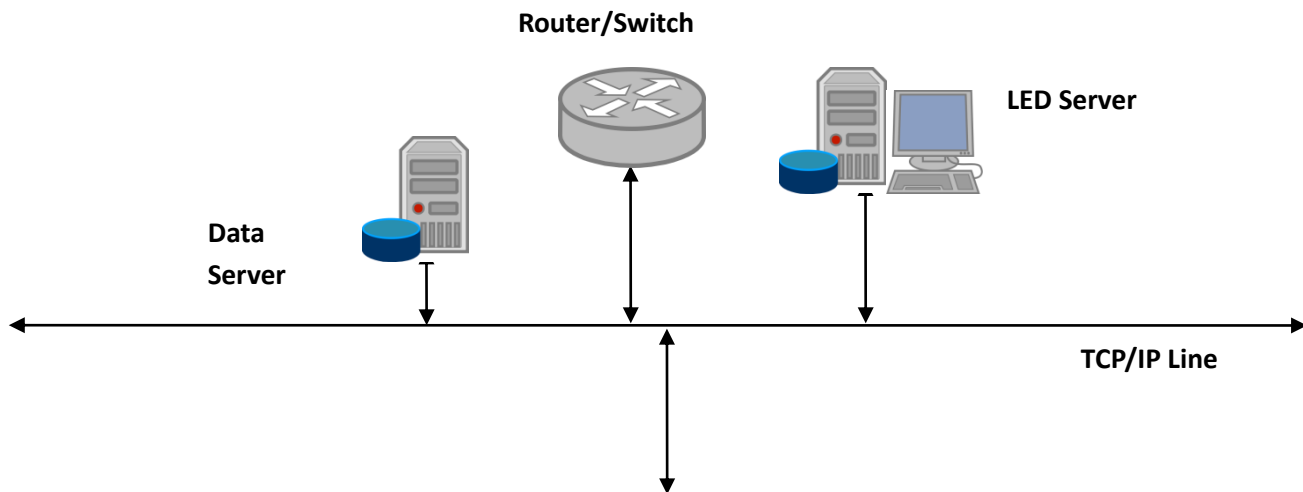
## Actual Image:



**Actual Image:**



## Technical Layout:



LED Message Display Board

## **Conclusion:**

Thus providing the largest LED Message Display Board and automating the visual indication process of real time Production parameter. This real time visual indication of production parameters will help enhance the productivity and awareness.